



Meech International  
2 Network Point  
Range Road, Witney  
OX29 0YN UK  
Tel: +44 (0) 1993 706700  
Fax: +44 (0) 1993 776977  
email: sales@meech.com  
web: www.meech.com

Produkt-Code: A261v2-32-1/4OUT

**COPYRIGHT © MEECH STATIC ELIMINATORS**  
THIS DOCUMENT AND THE INFORMATION  
THEREIN IS THE PROPERTY OF THE MEECH  
GROUP AND SHOULD NOT BE COPIED IN WHOLE  
OR PART OR USED FOR MANUFACTURE OR  
OTHERWISE DISCLOSED WITHOUT THE PRIOR  
WRITTEN CONSENT OF MEECH INTERNATIONAL

**TITLE: 261v2 Quarter Inch BSP  
Out, 6mm entry**

**DRAWING No:  
A261v2-32-1/4OUT**

**MATERIAL: Various**

**FINISH: Various**

<b>TOLERANCE UNLESS OTHERWISE SPECIFIED</b> Machined Work Metric $\pm 0.1\text{mm}$ Unmachined Fabrications $\pm 1\text{mm}$ Angular $\pm 0.30^\circ$	<b>DIMENSIONS IN MM DO NOT SCALE</b>	
	<b>CRITICAL TO FUNCTION (CTF) DIMENSIONS AS MARKED</b>	
	<b>PROJECTION</b>	<b>Scale</b>
		A4 2:3

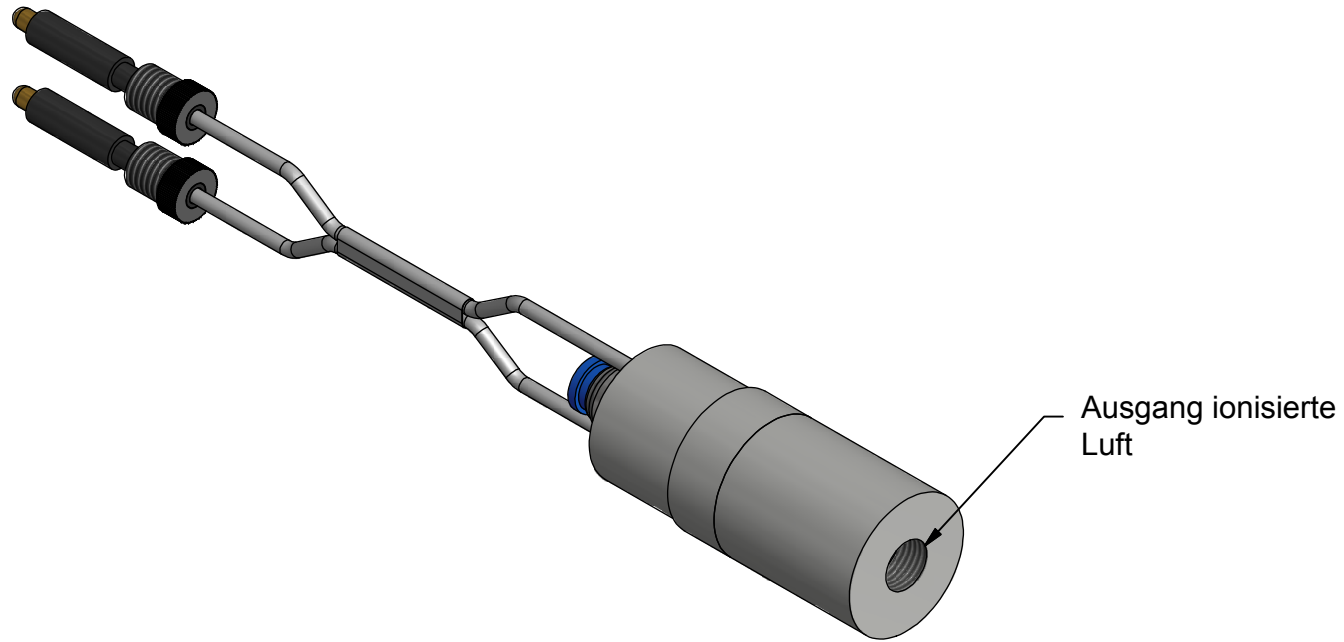
<b>PROJECTION</b>	<b>Sheet</b>	<b>Scale</b>
	A4	2:3

<b>Date:</b>	<b>Drawn by:</b>
08/09/2014	David.Hyde

**REVISION:**

**SHEET: 7 / 19**

**STATUS: Production**



Ausgang ionisierte  
Luft

6mm Anschluss

1/4" BSP Ausgang

74

23

$\varnothing 32$

Hinweis: - Die 261 Serie ist mit oder ohne 6mm Luftanschluss verfügbar  
- Ohne Luftanschluss verfügen die Düsen über eine 1/4" BSP Gewindebohrung